

THE FACTORY AUTOMATION COMPANY

FANUC

ROBOSHOT-LINK*i*2

Remote management of your plastic production facility



ROBOSHOT-LINK*i*2 is a quality information management tool that allows you to visualise ROBOSHOT data. Up to 1000 ROBOSHOT machines can be connected and monitored live from a remote PC or a smart device. Connectivity to FANUC robots is also possible via the robot interface function. For the latest ROBOSHOT series ROBOSHOT-LINK*i*2 can be displayed by a split screen directly on the machine and also remote operation of the robot is possible. Installed as a stand alone product and interfaced with Euromap 63 or 77 to enable future IoT requirements.

Main functionalities



PROCESS MONITOR

- customisable easy to understand graphical interface
- view the status of your connected ROBOSHOT machines
- cycle times for each machine can be quickly seen



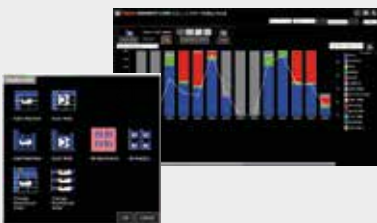
ROBOSHOT VIEWER

- ability to mirror ROBOSHOT screen from your PC or smart device
- possibility to modify some parameters remotely from the PC or smart device



LOG ANALYSIS

- possibility to analyse machines state over time
- provides information about alarm messages and time machine was stopped for
- parameter changes are logged for diagnostics
- shot analyses with useful variable information
- receive e-mail notifications about alarms



MOLDING RESULT

- clear indication of machine production processes
- processes split into individual intervals related to auto/ semi auto, alarms, etc.
- individually select machines or molds to be able to access more information



INTEGRATED MANUAL

- allows you to read the manual easily from the web browser
- easy search function



EUROMAP 63 or 77

- additional software option to support the Euromap 63 or 77 specification
- allows connectivity to upper host systems such as an MES with Euromap 63 or 77